



OPERATING INSTRUCTIONS

SAFE LOCK

CAWI PRIMOR 1000/3000

Electronic door lock for WA safes

Issue 08.2020

Thank you very much

We would like to thank you for choosing Waldis when it comes to safety.

When buying a safe, you have chosen a product tested according to EN1143-1. A Swiss quality product with VdS - tested security.

Please read these instructions carefully before commissioning your safe!

Your contact for questions

WALDIS Tresore AG

Hofwissenstrasse 20

CH-8153 Rümlang

Phone: +41 43 211 12 00

Fax: +41 43 211 12 12

E-Mail: info@tresore.ch

Table of contents

1. Safe lock	1
1.1. General notes	1
1.1.1. Closed position	1
1.1.2. Opening the lock	1
1.1.3. Closing the lock.....	1
1.1.4. Manipulation lock	2
1.1.5. Changing the code "With door open!"	2
1.1.6. Safety note.....	2
1.1.7. Meaning Acoustic signals.....	2
2. Power supply.....	3
2.1. General.....	3
3. Password	4
3.1. General basic rules.....	4
3.1.1. Avoid obvious passwords.....	4
3.1.2. Tips	4
3.1.3. Last but not least.....	4

1. Safe lock

1.1. General notes

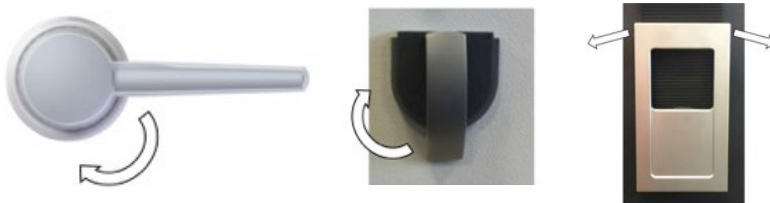
The lock works with a 6-digit numerical code. Each keystroke is confirmed with a signal consisting of a tone and a flashing sign.




After entering a valid code, a double signal follows. After an invalid entry, a long beep.

In case of pauses - longer than 10 sec. - the previous entries are deleted and you have to start again.

1.1.1. Closed position



 = Move to the "OPEN" position. (Turn in the direction of the arrow to open the safe).

1.1.2. Opening the lock

First turn the opening rotary handle to the closed position. This relieves the load on the lock bolt.

The factory code is 1-2-3-4-5-6

Enter the code and, after the double signal, turn the locking mechanism handle to the "OPEN" position within 3 seconds.

1.1.3. Closing the lock

Turn the bolt work handle to the "CLOSE" position as far as it will go. The lock closes automatically. Turn the bolt work handle to the "OPEN" position to **check whether it is locked.**

1.1.4. Manipulation lock

After 4 invalid code entries, the keypad is blocked for approx. 5 minutes. During this locking period, a flashing signal is audible every 10 seconds. If 2 incorrect codes are entered again after the blocking time has elapsed, the blocking time of 5 minutes starts again.

1.1.5. Changing the code "With door open!"

Example			
Press "0" key for a long time		0	(red LED lights up, double signal)
enter the valid code		123456	(double signal)
enter the new code	(example)	122133	(double signal)
confirm the new code	(example)	122133	(double signal)

The new code is stored in the lock. If errors occur during the changeover or if there is a pause - longer than 10 seconds - the old code remains valid. The changeover process must be started again.

1.1.6. Safety note

- Always change the factory code immediately.
- Do not use personal data such as birthdays, etc. as code.
- Keep the code (if necessary) in a safe place.

1.1.7. Meaning Acoustic signals

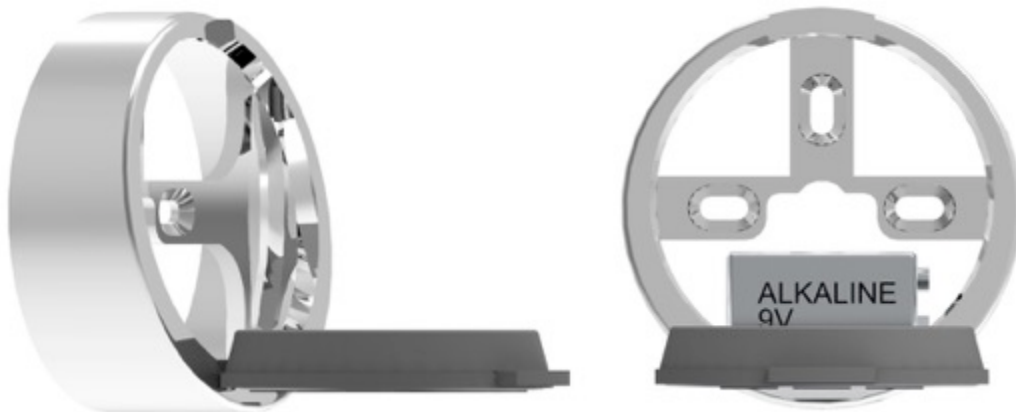
1x Signal:	Accepted	2x
Signal:	Code is correct	Long
beep:	Code is incorrect	

2. Power supply

2.1. General

If the battery voltage is insufficient, a warning tone is emitted several times in succession after the code is entered and the red LED flashes alternately several times. Change the battery. The programmed codes are retained during the battery change.

The lock is powered by a **9V ALKALINE** block battery.



3. Password

3.1. General basic rules

3.1.1. Avoid obvious passwords

- No trivial values like 000000, 0815, 123456
- Do not use your own birthday, car license plate, phone number or name (your own, wife/husband, children, pets, company, place of residence, etc.) as password. Do not use standard passwords like: "password" or "safe".
- Writing backwards is also too easy
- Do not use a password that you already use
- Important passwords should not have a logical structure

3.1.2. Tips

- The first rule: **A password is only secure if it remains secret!**
- Remember passwords - don't write them down anywhere!
- Consider all keys if possible (wear marks on the keyboard betray the individual numbers over time)

3.1.3. Last but not least

Consider how the password will still be retained if the owner can no longer disclose the password (e.g., in the event of death). Leave a sealed envelope with your notary.

